

GLASS

Choose the glazing that best meets your needs.

| | |
|--|----------------------|
| | uninsulated |
| | continually walkable |
| luminous transmission index t _L [in%] | 83 |
| carrying capacity [kN/m ²] | 5 |

In standard sizes, the Skyfloor BL provides a complete ready-to-install glass frame system comprising a vented frame with integrated walk-on glazing.

The given values are for guidance purposes

STANDARD

Skyfloor BL meets the standards for walk-on glazing required in Germany, Austria and Switzerland.

SKYFLOOR BL

TECHNICAL DATA

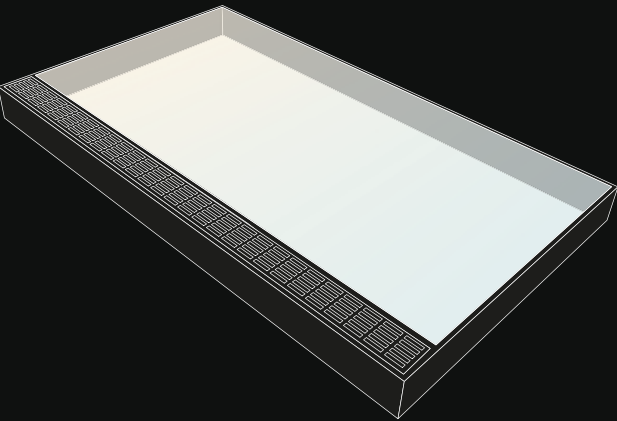
THE WALK-ON LIGHT SHAFT GLAZING

FORM

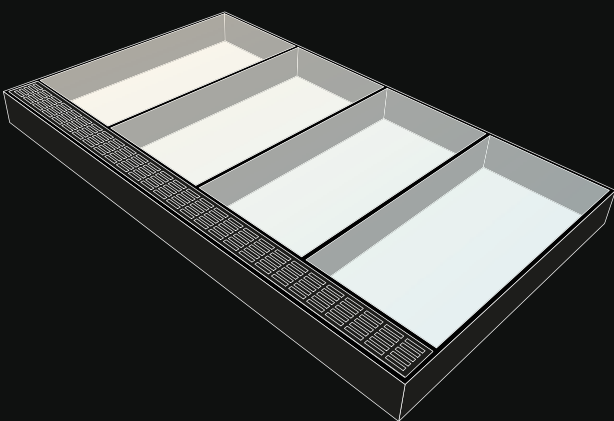
Choose the form of the walk-on light shaft glazing with integrated ventilation grid that best meets your needs. Built as standard, with a customised finish. Wide variety of add-ons can be individualised.



THE RECTANGLE



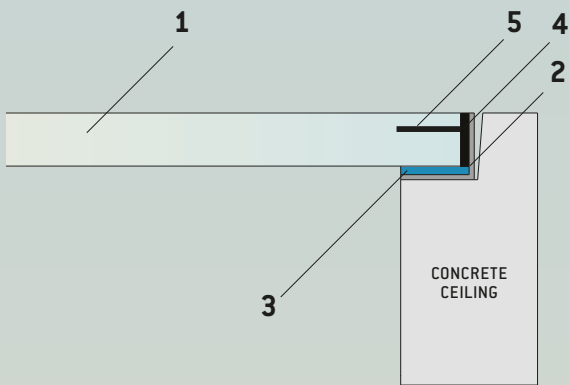
THE INDIVIDUAL



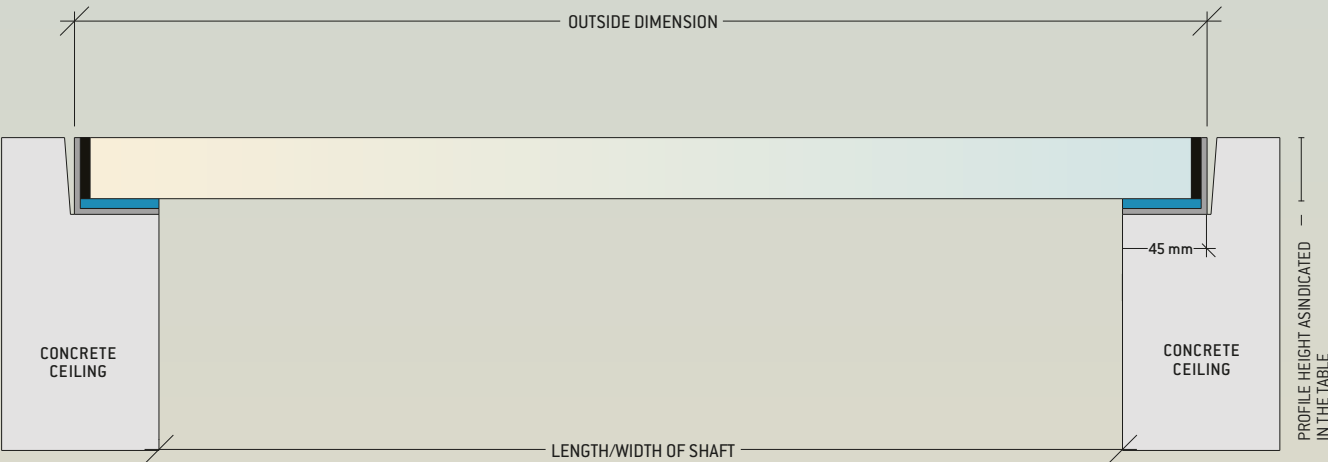
CONSTRUCTION

- 1 1 static laminated safety glass *
- 2 stainless steel frame - brushed - with integrated ventilation grid
- 3 steel core for glass support
- 4 sealing joint - black
- 5 ceramic strips - black (optional)

*laminated safety glass glazed in factory-provided frame



DIMENSIONS



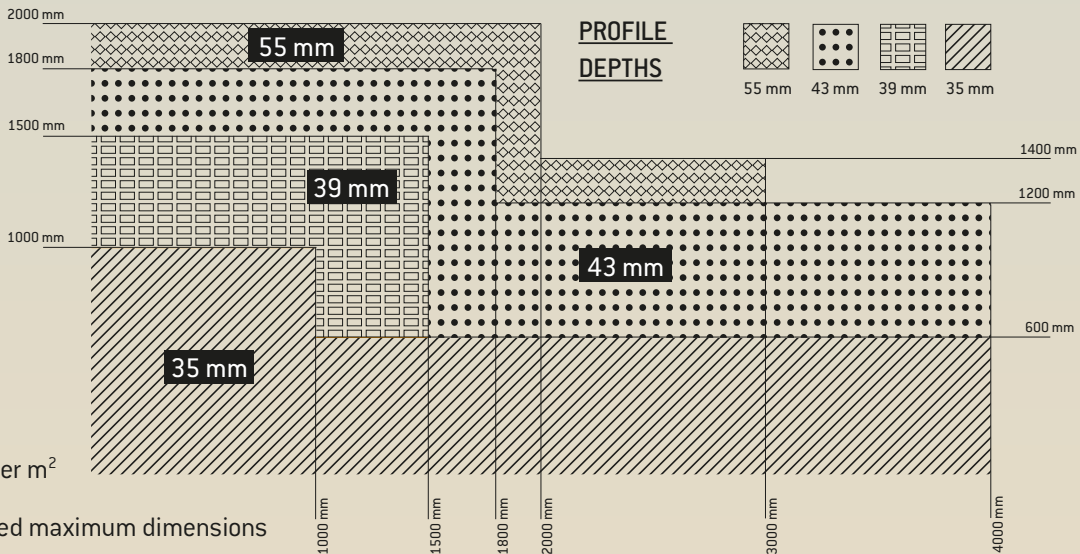
MAXIMUM OUTER DIMENSIONS WITH ONE GLASS



- bis 200 x 200 cm
- bis 300 x 150 cm
- bis 400 x 130 cm

Weight: approx. 80 kg per m²

Sizes above the specified maximum dimensions can be realised using glass partitions.

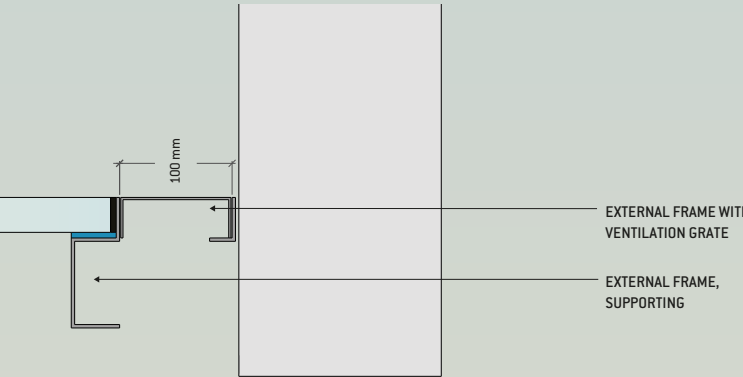


CONNECTION

After removal of the metal grate, the installation of the Skywell BI walk-on light shaft cover can be undertaken by the client, or by a local specialist.

For outdoor installations we recommend a 2% incline to ensure drainage of rain and condensate.

WALL CONNECTION

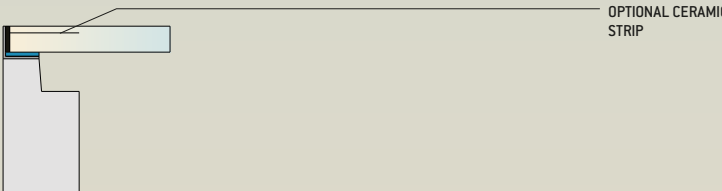


CONNECTION OPTIONS

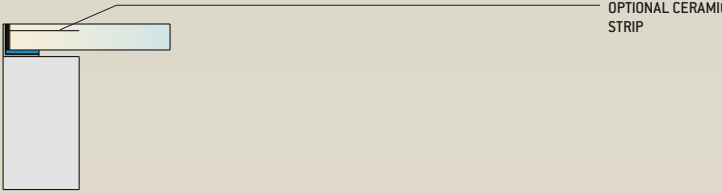
IN CONCRETE REBATE



ON CONCRETE REBATE



WITHOUT CONCRETE REBATE



DIVISION OF GLASS

